

PRIMARY CARE

DEFINITION

MAIN CHIEF MOST IMPORTANT

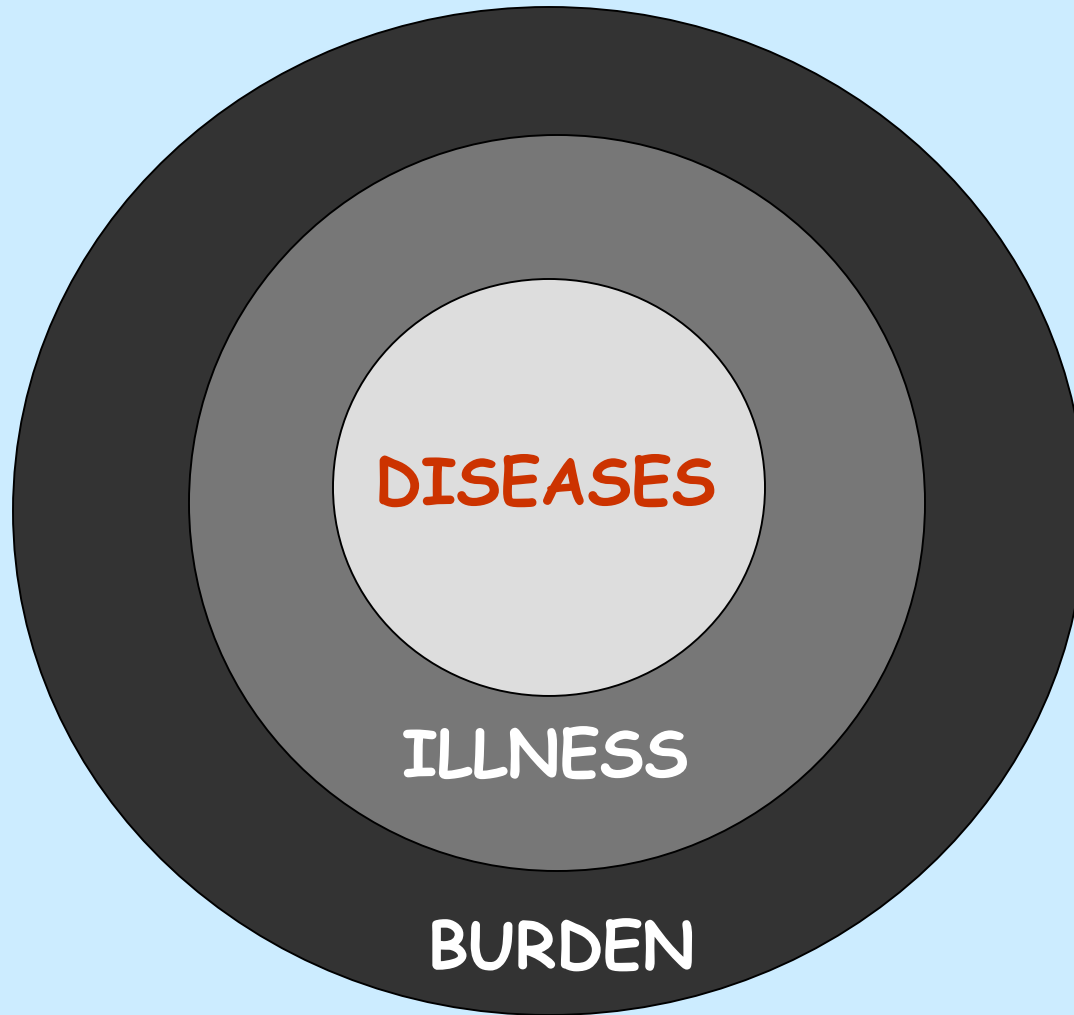
PRINCIPAL

BASIC

ESSENTIAL

FUNDAMENTAL





## PC PRINCIPAL

FIRST CONTACT

COMPREHENSIVE CARE

CONTINUOUS CARE

CATCHMENT POPULATION

COORDINATED CARE

COMMUNITY INVOLVEMENT

## SITUATION

BYPASS

QUALITY

ONLY HV/HHC

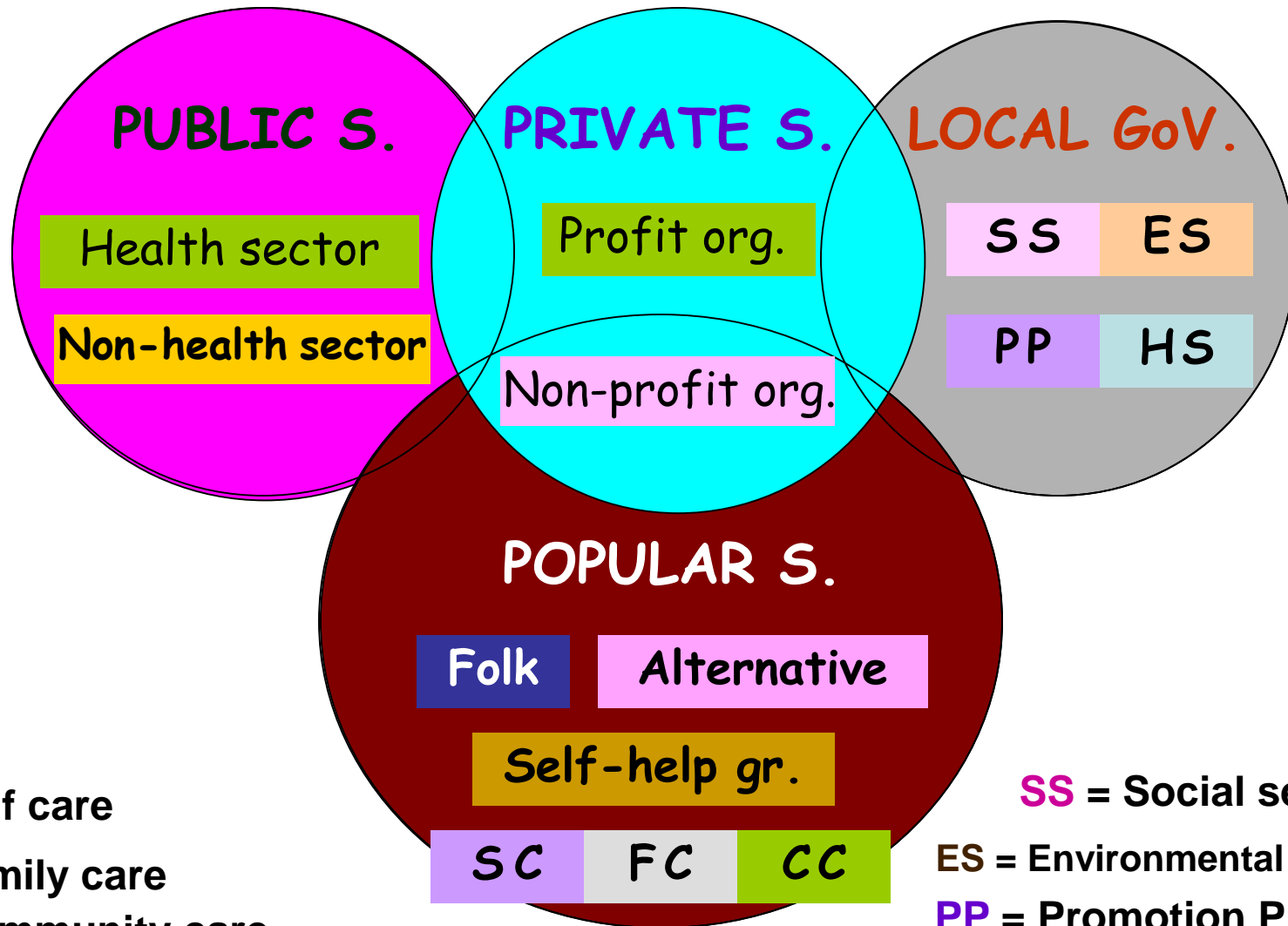
COVERAGE

IN-EFFICIENCY

PASSIVE PARTICIPATION

CENTRALIZATION

# Health Care Sector in Thailand



**SC** = Self care

**FC** = Family care

**CC** = Community care

**SS** = Social service

**ES** = Environmental service

**PP** = Promotion Prevention

**HS** = Health service

# ระบบบริการปฐมภูมิกับเงื่อนไขการพัฒนา

## Primary Care

Provide less complex medical service

Be responsible for definite target population

Locate close to the community

Geographically easily access

Feasible to manage as a polyvalent team

Feasible to establish relationship with the Community

- Community based services
- Community involvement
- Empowerment of people and the community
- Create healthy environment

Integration Of services

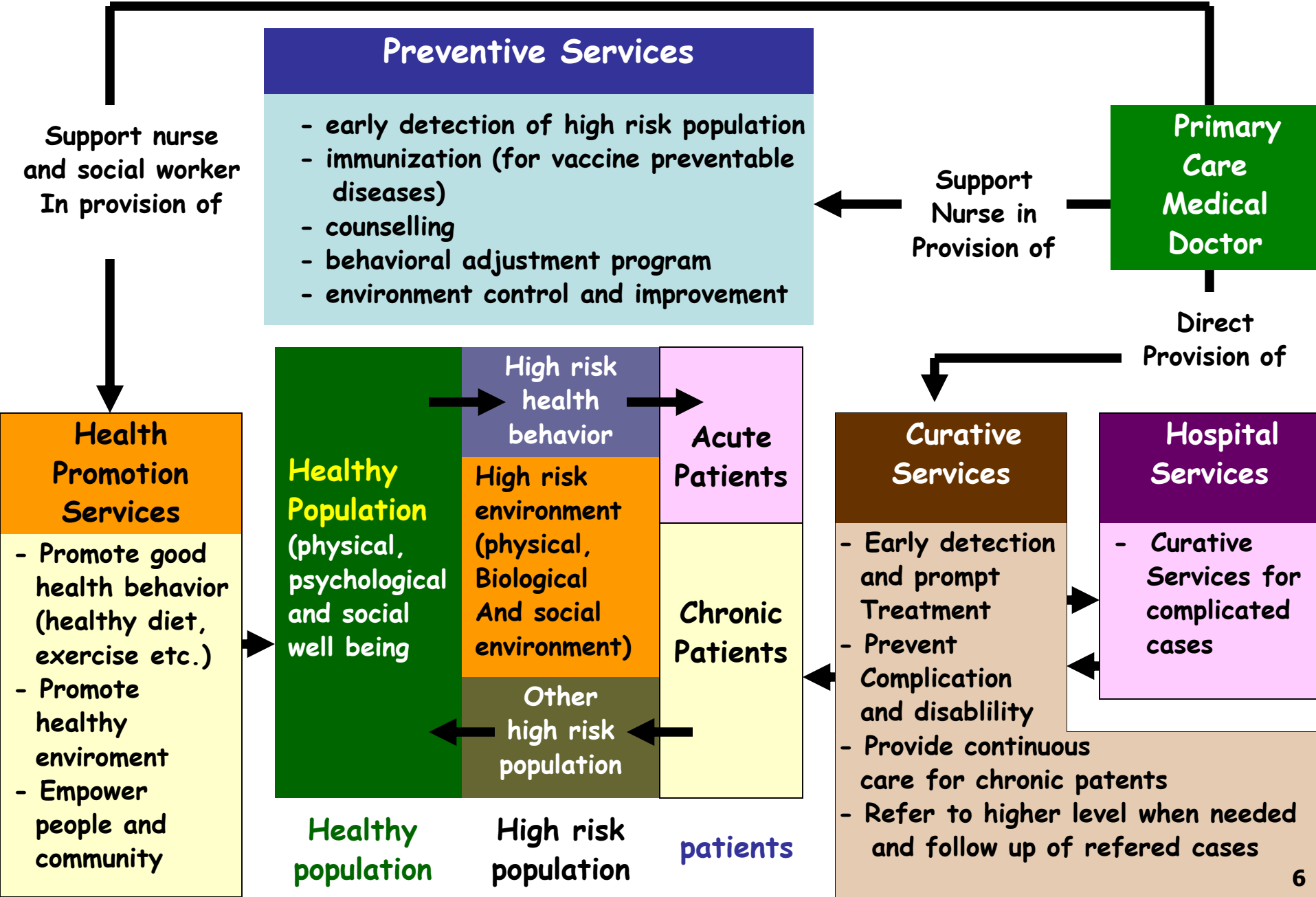
Holistic Care

Precondition for providing holistic care

Support Health Promotion

Equity to Access Care

# บทบาทแพทย์ในระบบบริการปฐมภูมิ



1. HOLISTIC & **INTEGRATED** & HUMANIZED CARE
2. CLINICAL PERFORMANCE  
COMMON DISEASES & **EMERGENCY CARE**
3. COMMUNITY SKILL
4. INTERPERSONAL & COMMUNICATION SKILL
5. MANAGE EFFICENCY & APPROPRIATE TECHNOLOGY
6. **NETWORKING ALL SECTOR  
IN COMMUNITY CONTEXT**

# ระบบบริการสาธารณสุขแบบบูรณาการ (IHCS)

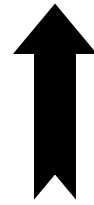
## S L H S (Hospital)

Referral center

Care for more complicated cases

FLHS supporter

- 4. Support
- 5. Referral system
- 6. Information system



- 1. Standardization
- 2. Training
- 3. Supervision

## FLHS (Primary care unit)

First contact

Comprehensive

Continuous

Coordinate

Com. involvement



FAMILY CARE

SELF CARE

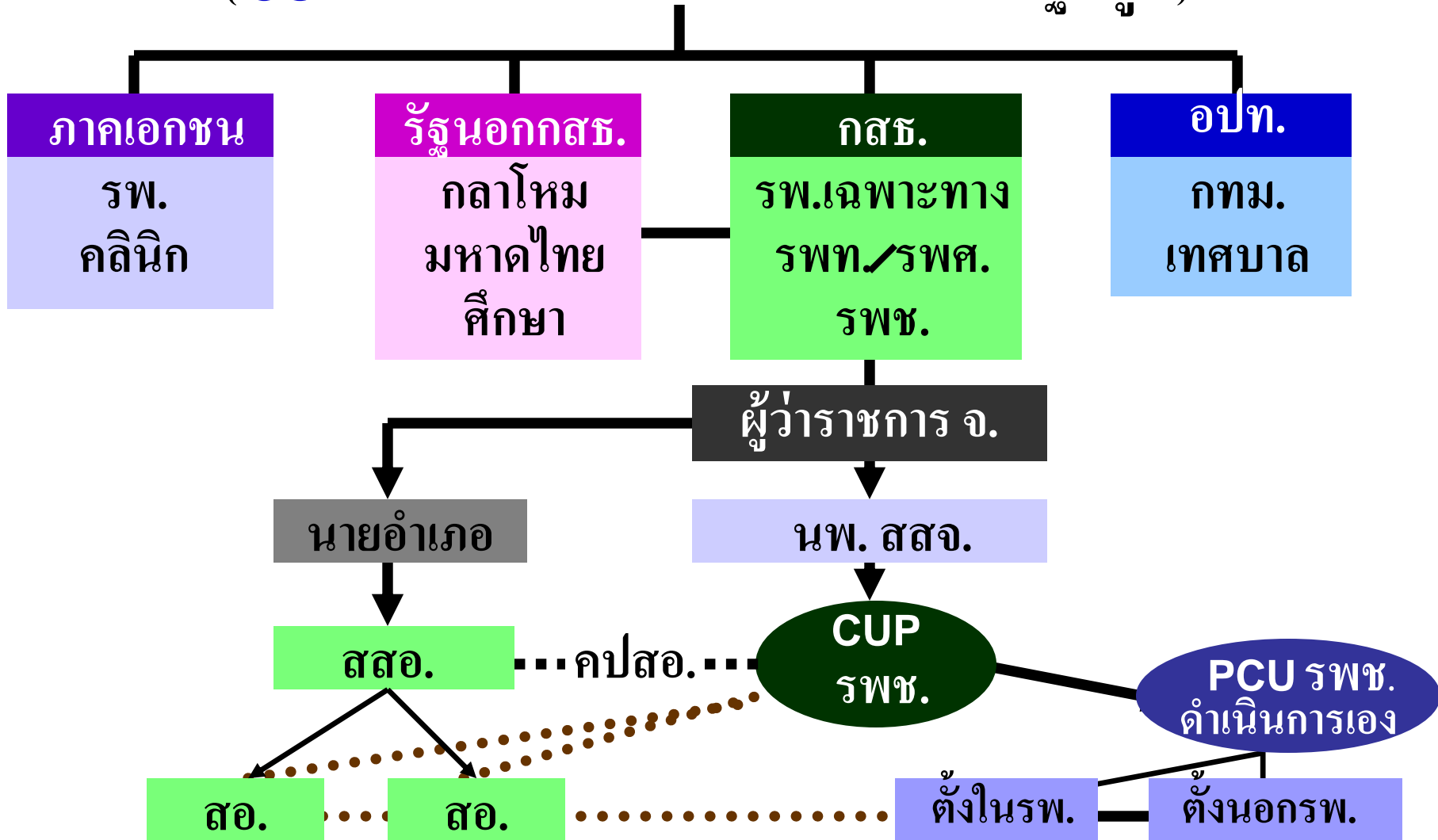
COMMUNITY CARE

Catchment Area / Population



# ประเภท CUP ในประเทศไทย

(CUP = หน่วยบริหารเครือข่ายบริการปฐมภูมิ)



PCU = หน่วยบริหารใกล้บ้าน - ใกล้ใจ

วิเคราะห์โครงสร้างเครือข่ายบริการปฐมภูมิในระดับอำเภอที่เป็นอยู่ กับ ที่ควรจะเป็น