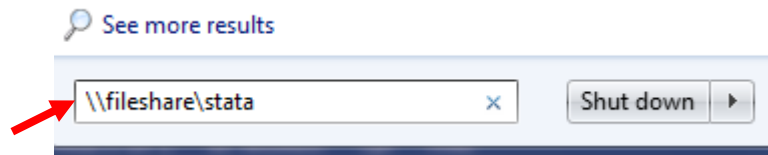
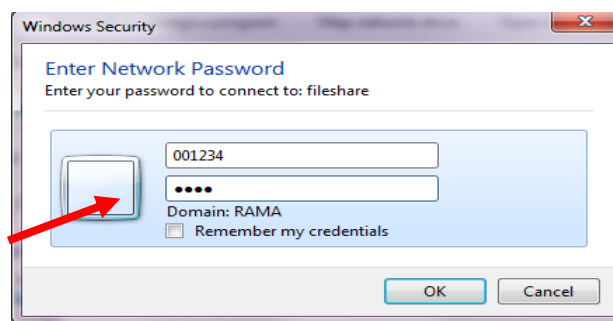


How to use STATA program on the Faculty Server

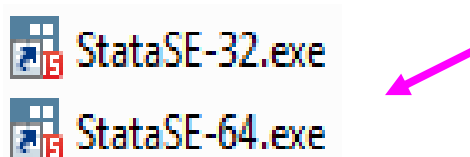
1. go to search program and type [\\fileshare\stata](#)



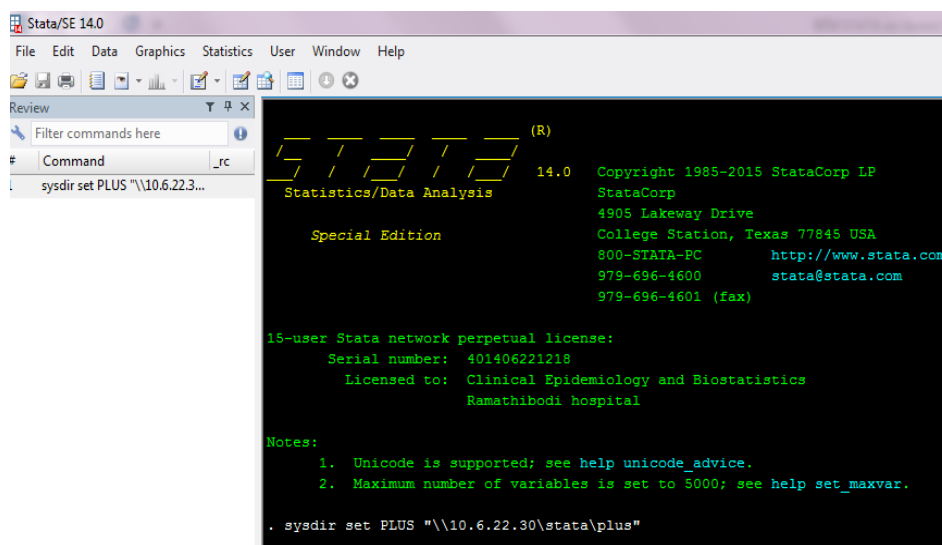
2. User name : type "rama\" followed by your employee identification code
Password : Use the same password as for using HR iservices
OR User name : stata Password : stata



3. Double click the icon StataSE to use the STATA program



4. Type `sysdir set PLUS "\\fileshare\stata\plus"`, then Enter



5. Then you can run command the STATA program normally