



Mahidol University
Wisdom of the Land

A Case Study of Palliative Care

Suchira Chaiviboontham, PhD, APMSN
Piyawan Pokpalagon, PhD, RN
Noppawan Phinijkhajorndech, PhD, RN



Objective:

To explore the palliative care management in various context.



Design: Mixed method study.



Setting

The organizations/hospital that has established a well-known palliative care in Thailand.

- 1 Tertiary Care Cancer center
- 1 Secondary Care Hospital
- 1 Religious organization provided care for cancer patients
- 1 Religious organization provided care for HIV/AIDS patients



Population and Sampling

Purposive sampling

Forty-six informants were participated

- 6 healthcare providers
- 30 patients
- 10 caregivers



Instruments

1. Personal information questionnaire of healthcare provider/patients/family
2. Organization assessment form
3. Semi-structure interview
4. Palliative care patient satisfaction evaluation form.



Procedure

Data were collected both quantitative and qualitative by means of questionnaire, interview guide, field note, observation, focused group or individual interview among healthcare personnel, patients, and caregivers.



Analysis

Quantitative data was analyzed by mean and percentage and content analysis method was used to analyses the qualitative data.



Results

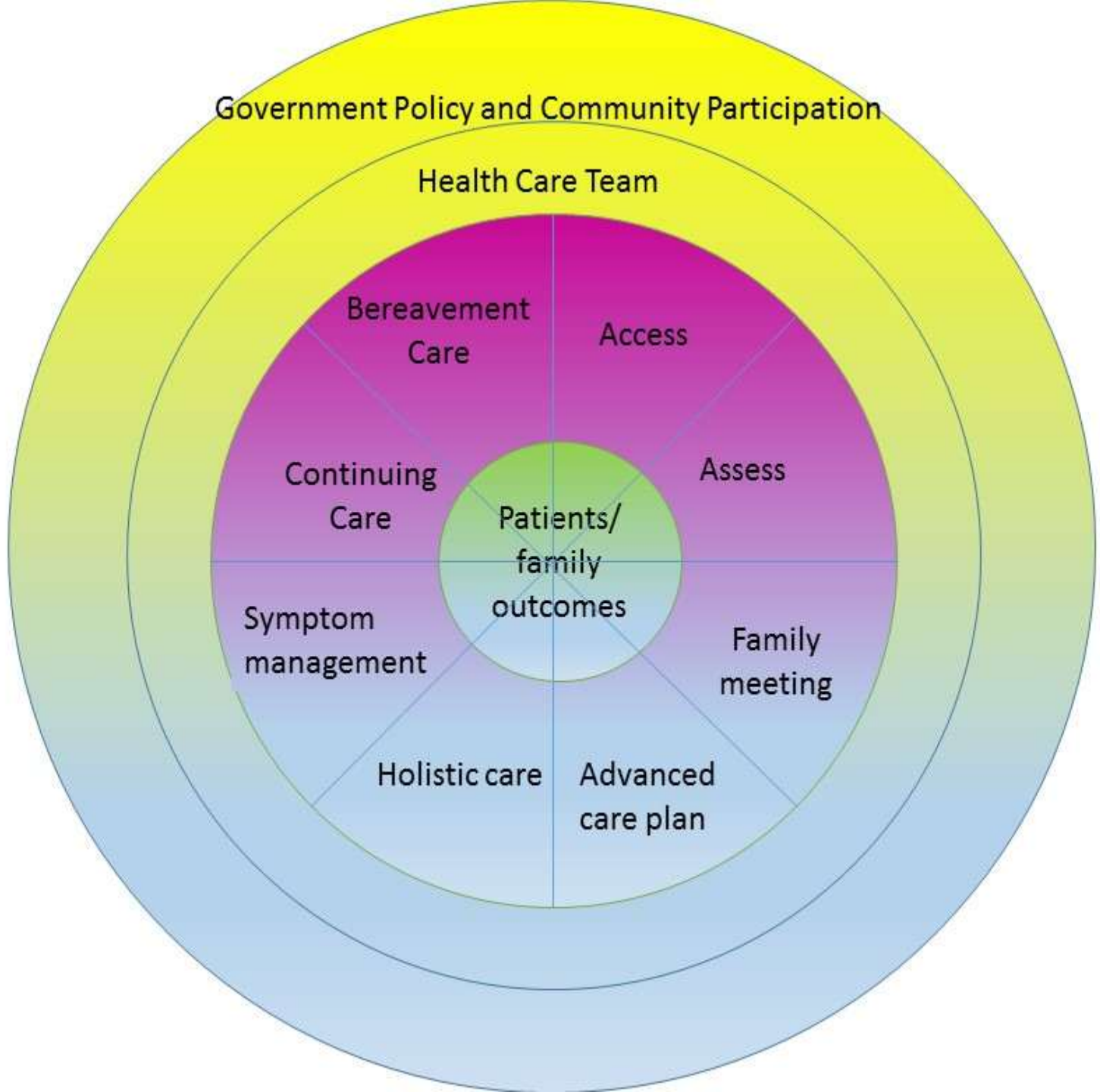
- 1) Structure consisted of policy, staff, financial, medical equipment, and IT
- 2) Process consisted of access to care, assessment, care plan, holistic care, pain and symptom management, and referral



Results

Outcomes

- Patients and families outcome which received a comprehensive palliative care
- Quality of care outcome show success of ACP conducted, opioid availability, bereavement care delivered, and patients and families satisfaction
- Other outcomes such as friendship among patients and families built up an in-depth understanding each other and also understanding and accepted that death is a process of life.



Government Policy and Community Participation

Health Care Team

Bereavement
Care

Access

Continuing
Care

Assess

Patients/
family
outcomes

Symptom
management

Family
meeting

Holistic care

Advanced
care plan



Recommendations

- Set up a tailored made palliative care.
- One stop service
- Proactive care
- Early palliative care
- Care map
- Drug and opioids availability
- Referral system
- Quality indicators



Thank you for your attention